

Intellego DPE™ - Dynamic Processing Engine

Automate the creation of a consistent metadata layer

Organizations are currently swamped with vast torrents of information through the expanded use of e-mail, the Internet, line of business applications, and other internal and external sources. It is unlikely that this phenomenon will abate in the near future. Harnessing the power of all of this information requires the application of some structure to it ("metadata": see box below). Traditionally, this has been done by corporate editors or by end users. Both of these methods have significant problems.

Costly Manual Methods of Metadata Creation!

Corporate editors

The use of specialized editorial teams to manually create metadata for unstructured information is one method frequently deployed by organizations. The use of corporate editors can overcome some problems, however this method falls short in many areas and creates new issues and overhead costs.

Limitations of metadata creation by an editorial team:

- Greatly increased costs of information management
- Inconsistency of metadata as a result of differing personal perspectives
- Direction of resources away from core business
- Increased costs with only a marginal improvement in the metadata layer.

User defined metadata

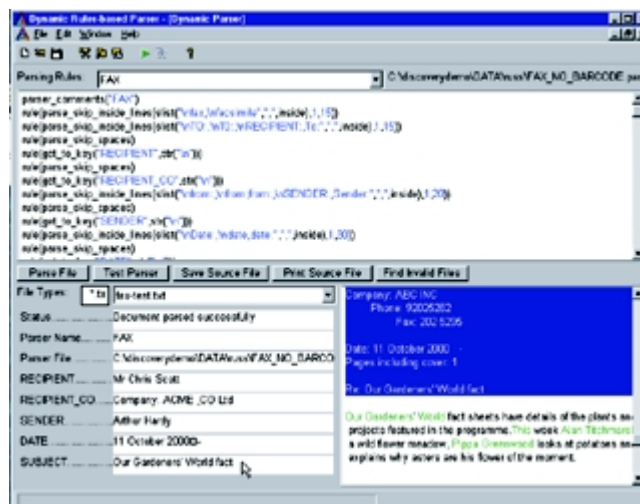
Manual creation of metadata by end users within an organization can be ineffective at best and futile at worst.

Limitations of user defined metadata:

- Users do not have time or motivation to complete metadata fields resulting in a hole in the metadata layer
- Inconsistency of metadata as a result of differing personal perspectives
- Ineffective and incomplete search results

The Intellego Solution -- Automated Metadata Creation!

Insight has developed an intelligent rules-based processing engine, Intellego DPE™ (Dynamic Processing Engine), that automates the generation of metadata for unstructured information.



Dynamic Parser interface

Driven by the same technology found in the Intellego Suite™ and B2B Intellego™, this advanced software engine receives documents and data from multiple disparate sources, applies self learning Artificial Intelligence (AI) driven pre-defined business rules, and outputs the metadata. The output metadata can be in XML, HTML, or other application formats as required.

The Intellego DPE also outputs command fields to action other line of business applications such as a workflow engine or email system. The Intellego DPE allows administrators to define a series of guidelines (rules) to the engine that it then applies to incoming documents and data in order to process them. As a result, the metadata created is output according to the classification rules and standards of the organization.

Metadata: what it is and why your company needs it ...

Quite simply, metadata can be described as 'data about data'. For example, metadata fields such as Title, Date, Author and Subject are commonly used to describe documents. Metadata enables an organization to use its information efficiently, to accurately associate it with related information and to condense and simplify it.

As the means by which line of business applications identify and take action on documents and data, metadata is critical to the successful implementation of an information management system. Without a consistent and accurate metadata layer those applications do not deliver the required efficiencies.

US Headquarters:

Insight Software Corporation

www.insightdot.com

4555 Lake Forest Drive
650 Westlake Center
Cincinnati, OH 45242
USA

Tel: (513) 563 3036
Fax: (513) 563 3011
Email: aparis@mailtoinsight.com

Asia Pacific Region:

Insight Technologies (Asia Pacific P/L)

www.insightdot.com

Level 1, 815 Pacific Highway
Chatswood
Sydney NSW 2067
Australia

Tel: +61 2 9884 9733
Fax: +61 2 9884 9633
Email: psargeant@mailtoinsight.com

Contact us at the above addresses and check out www.insightdot.com for latest info and news.

In addition to the powerful automated metadata functions, the Intellego DPE also fully integrates with a number of advanced concept-based extraction engines. This integration enables the system to index content contained within documents and to extract the meaning and topic of those documents. The integration with concept-based extraction engines enables support for the generation of additional natural language metadata and categorization of documents based on the concepts they contain.

The automated process of metadata generation driven by the DPE results in a consistent and effective metadata layer for an organization with minimal additional costs.

Features - Benefits of DPE Automated Metadata Layer

Automated metadata generation

- Elimination of manual editors and creation of metadata by users
- Significant reduction in information management costs
- Re-focus of resources on core business
- Greatly increased efficiencies

Application of business rules to metadata generation

- Consistency of metadata layer
- More effective user searches for information
- Single query required for search across multiple applications
- Clear picture of all customer points of contact with an organization
- Leveraging of existing application architecture
- Integration with existing applications - web publishing, document management, records management, etc.
- Enhanced deployment of line of business applications

Distributed document/data sources

- Storage in central repository NOT required
- Platform independence
- Application independence

Integration with concept-based engine

- Automated generation of additional metadata
- Natural language based capabilities for more effective user search

The end result of an automated and consistent metadata layer is that existing line of business applications will be more efficient, users will be more effective in their search for information and the costs associated with managing information are greatly reduced.